

Stainless Steel Card Cage Gaskets

SPRING-LINE® stainless steel card cage gaskets provide EMI shielding to the expansion slot area of the PC and Server chassis. Designed for cost effectiveness and ease of installation, Chomerics' card cage gaskets fit into most existing chassis without modifications. Chomerics uses high quality stainless steel to reduce corrosion and galvanic reactions.

The contact fingers are designed to minimize any snagging during the installation of the cards. Chomerics' card cage series are available in two options.

"Style 1" is available for PCI/EISA slot configurations from 1 to 10. This gasket is designed for greater ease of installation and to fit the widest range of chassis (See Figure 1).

"Style 2" has integral hooks for retaining the card cage gasket in place during assembly. This gasket requires a more specific design to fit the attachment hooks. It is available from 1 to 20 slots (See Figure 2).

For additional stability, both styles are available with PSA added as a custom option. *To reduce the potential for galvanic reaction on some surfaces, pre-tin plate is also available (minimum order quantities will apply)* For PSA location options and Pre-Tin plate, please contact Chomerics Application Engineering.

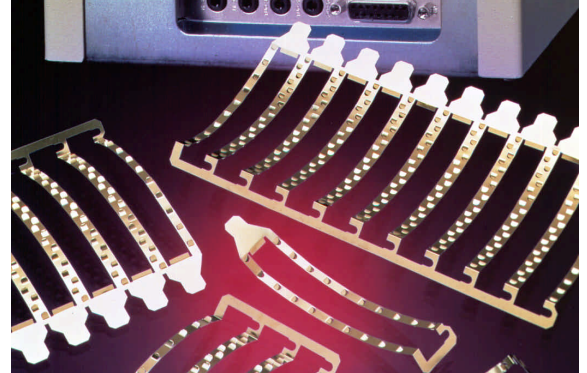


Photo depicts style 1

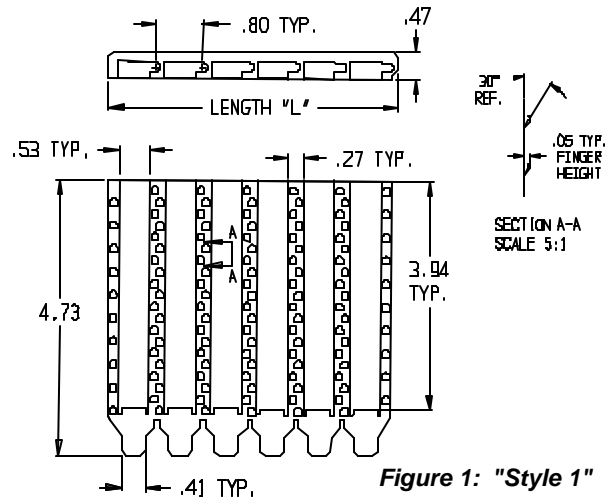


Figure 1: "Style 1"

Ordering Procedure:

81 - XX - XXA20 - 003X

SPRING-LINE Product

01= no PSA (standard)
02 = with PSA

Plating Finish
2= Clean and bright
5= Pre-tin Plate (*minimum order quantities will apply*)

Base Material Thickness
0.003 inch (0.076mm)

No. of Fingers Surrounding Slot
20 Fingers

Material Alloy
A=SS 301/302

No of slots in cage (XX)	01	02	03	04	05	06	07	08	09	10
Length "L" inches (mm)	0.990 (25.15)	1.790 (47.47)	2.590 (65.78)	3.390 (86.11)	4.190 (106.43)	4.990 (126.75)	5.790 (147.02)	6.590 (167.39)	7.390 (187.71)	8.190 (208.03)

P/N Example: 81-01-05A20-0032 denotes a five-slot, 0.003 inch (0.076mm) thick, Stainless steel (301/302) card cage gasket with no PSA, twenty fingers and no finish

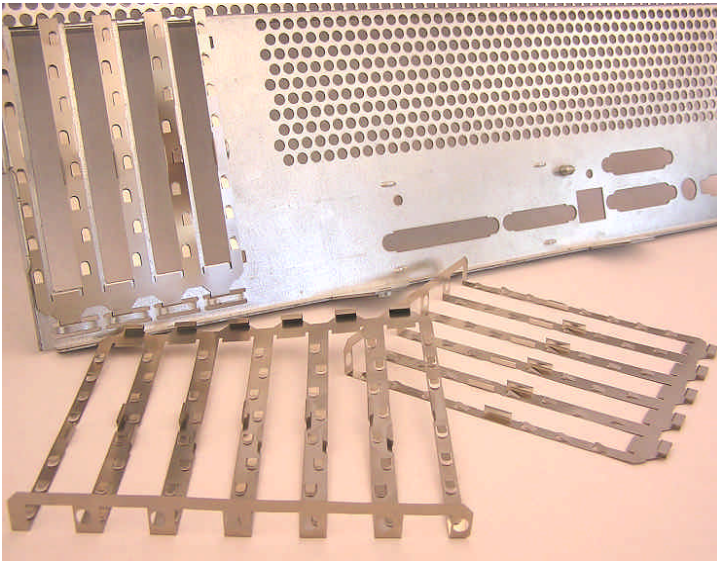


Photo depicts style 2

Standard Base Material Specifications	
Material Alloy	SS 301/302
Temper	1/2 Hard
Finish	Clean & Bright
Plating	None
Yield Strength	130-150 ksi
Tensile Strength (Per ASTM A666)	150 ksi
"Style 1" Thickness	0.003" ±0.0005"
"Style 2" Thickness	0.004" ±0.0006"
Plating Options	
Pre-Tin Plate	
Plating Thickness (Per MIL-T-10727)	5.08-10.16 microns

Ordering Procedure:

Use the following part number system to order this SPRING-LINE® card cage gasket.

81-G2-XXA08

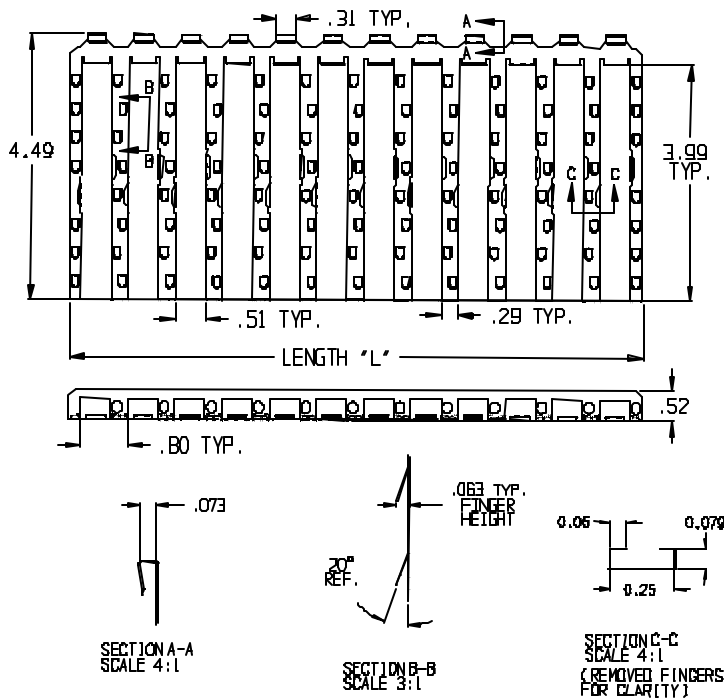


Figure 2: "Style 2"

No. of Slots in Cage (XX)	Length "L" inches (mm)
01	0.93 (23.62)
02	1.73 (43.94)
03	2.53 (64.26)
04	3.33 (84.58)
05	4.13 (104.90)
06	4.93 (125.22)
07	5.73 (145.54)
08	6.53 (165.86)
09	7.33 (186.18)
10	8.13 (206.50)
11	8.93 (226.82)
12	9.73 (247.14)
13	10.53 (267.46)
14	11.33 (287.78)
15	12.13 (308.10)
16	12.93 (328.42)
17	13.73 (348.74)
18	14.53 (369.06)
19	15.33 (389.38)
20	16.13 (409.70)